

# Location Map



## Distance from the Site

Kadri Temple	- 1.5 kms
Kadri Market	- 1.0 kms
St. Aloysius College	- 3.0 kms
St. Agnes School & College	- 1.8 kms
St. Sebastian Church	- 1.8 kms
NH 66	- 0.3 kms

## Ongoing Project



**Four Walls Aarambh**  
Premium Commercial Business Centre  
Bejai - Kapikad, Mangaluru

## Promoters



**FOUR WALLS**  
Builders and Developers

D.No.5-15-1354, Thilak Mahal, Mannagudda,  
Residential Cross Road 15, Mangalore - 575 003  
✉ : [fourwallsbuilder@gmail.com](mailto:fourwallsbuilder@gmail.com)  
🌐 : [www.fourwallsmangalore.com](http://www.fourwallsmangalore.com)



For More Details Contact

**+91 70223 12233**



This brochure is purely conceptual and is not a legal offering. The promoters / architects reserve the right to add / delete / alter any detail / specification / elevation mentioned herein



Express Your Individuality at

**FOUR WALLS**  
**Bhuvi**  
Residential Apartments  
Kadri - Shivabagh, Mangaluru



Registration No :  
PRM/KA/RERA/1257/334/  
PR/140525/007744  
Building Licence No :  
ಇ4/ಅವ 39/2024-25 (200921)  
ತರೀಖೆ 230/2024-25



FOUR WALLS  
**Bhuvi**  
Residential Apartments

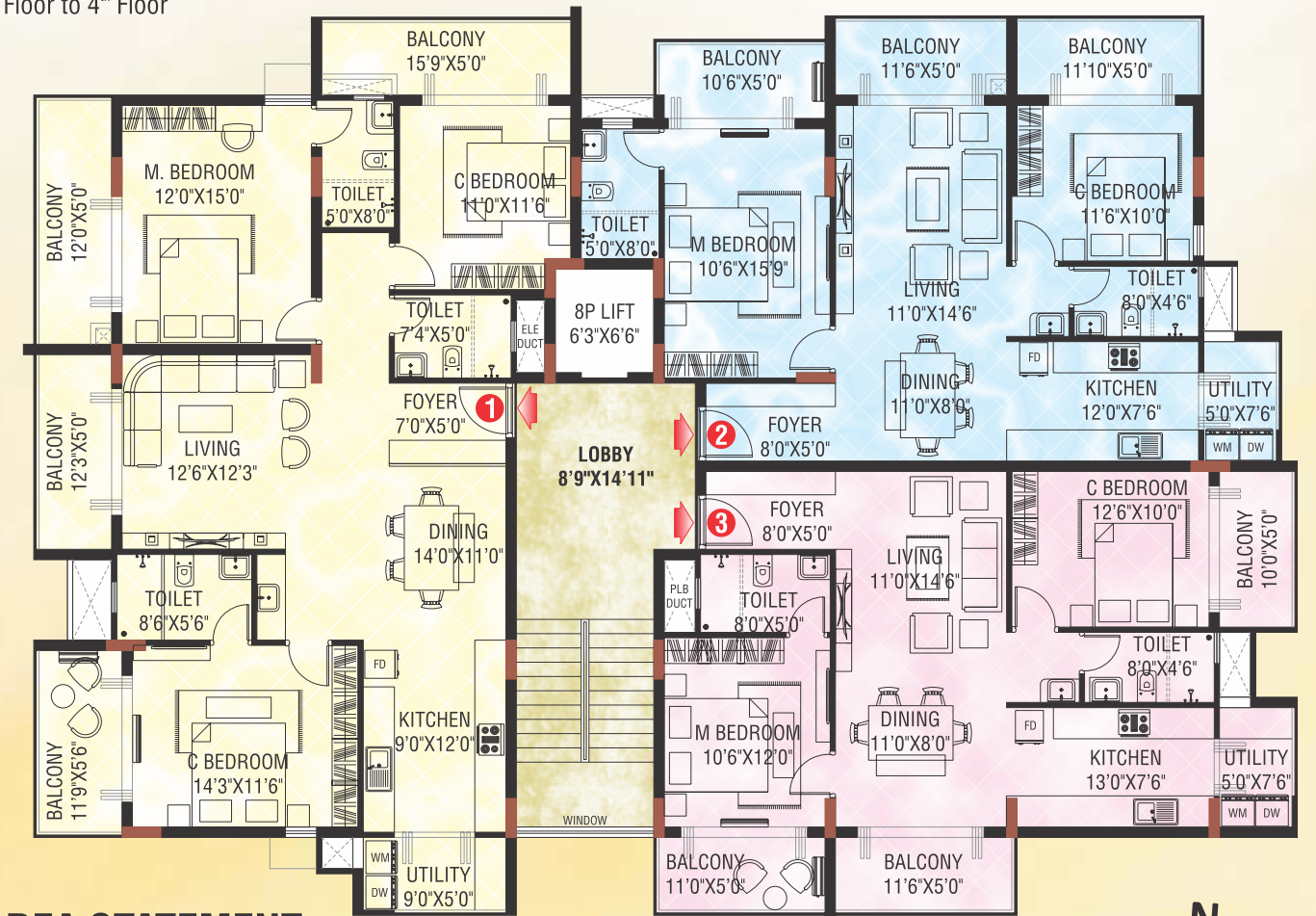
This gated community is set in the tranquil neighborhood of Kadri - Shivabagh, Mangaluru, blending nature with modern living effortlessly. Designed with precision, the space radiates both creativity and functionality, making it perfect for your family. The thoughtfully planned apartments are tailored to meet your unique lifestyle, offering comfort and elegance in every corner.

Constructed with premium materials, every detail is crafted to create the dream home you've always envisioned. From expansive living spaces to luxurious features, this project is a true statement of refined living. The location offers the warmth of suburban life while being perfectly connected to the city, ensuring both peace and convenience. With exceptional design and superior construction, this development sets a new benchmark in residential living. At Four Walls Builders and Developers, building quality homes is not just a profession-it's our passion to enhance your lifestyle.



## Typical Floor Plan

1<sup>st</sup> Floor to 4<sup>th</sup> Floor



### AREA STATEMENT

- Flat No. 1 : 3 BHK** 1905 Sq.Ft.
- Flat No. 2 : 2 BHK** 1254 Sq.Ft.
- Flat No. 3 : 2 BHK** 1217 Sq.Ft.

## Highlights & Amenities

- Well designed 2 & 3 BHK Apartments
- One No 8 passenger automatic elevators with ARD attachment
- 360 degree CCTV Coverage
- Video Door Phone
- Car Park Access Entry with Doom Barriers
- Gymnasium / Yoga Room at terrace floor
- Ample parking facility
- 100 % Power backup

### CIVIL WORK

- Fully covered RCC structure with laterite masonry for external walls and solid block masonry for internal walls
- Elegantly designed melamine Main Door
- Excellent quality vitrified flooring with skirting
- Granite / ceramic tiles with skirting for common area
- UPVC/Aluminium windows with MS grill protection
- Superior quality electric wires of reputed brand
- Excellent quality sanitary ware
- All weather exterior paint with putty finish

### DRAWING/DINING

- TV point / Cable TV connection and telephone/ intercom connection
- Two way light control with modular switches
- Hand wash basin
- Power supply for split AC System

### BEDROOMS

- Power supply for AC for living and all bedrooms
- Two way light control with modular switches
- Telephone, TV point & cable connection in all bedrooms

### BALCONIES

- Elegant balcony railing with safety measures
- Separate drain pipe to drain out water

### BATHROOMS

- Waterproof treatment for sunken Free RCC slab
- Leak proof drainage system
- Hot and cold water mixture for all bathrooms
- Designer wall tiles for full height & anti skid ceramic tiles for flooring
- Reputed brand bathroom fittings
- Provisions for exhaust fan and electric heater

### KITCHEN

- Adequate electric power points
- Provision for water purifiers
- Power point for refrigerator & microwave oven
- Provision for exhaust fan
- Granite platform with stainless steel sink
- Plumbing & drainage connection with power point for washing machine